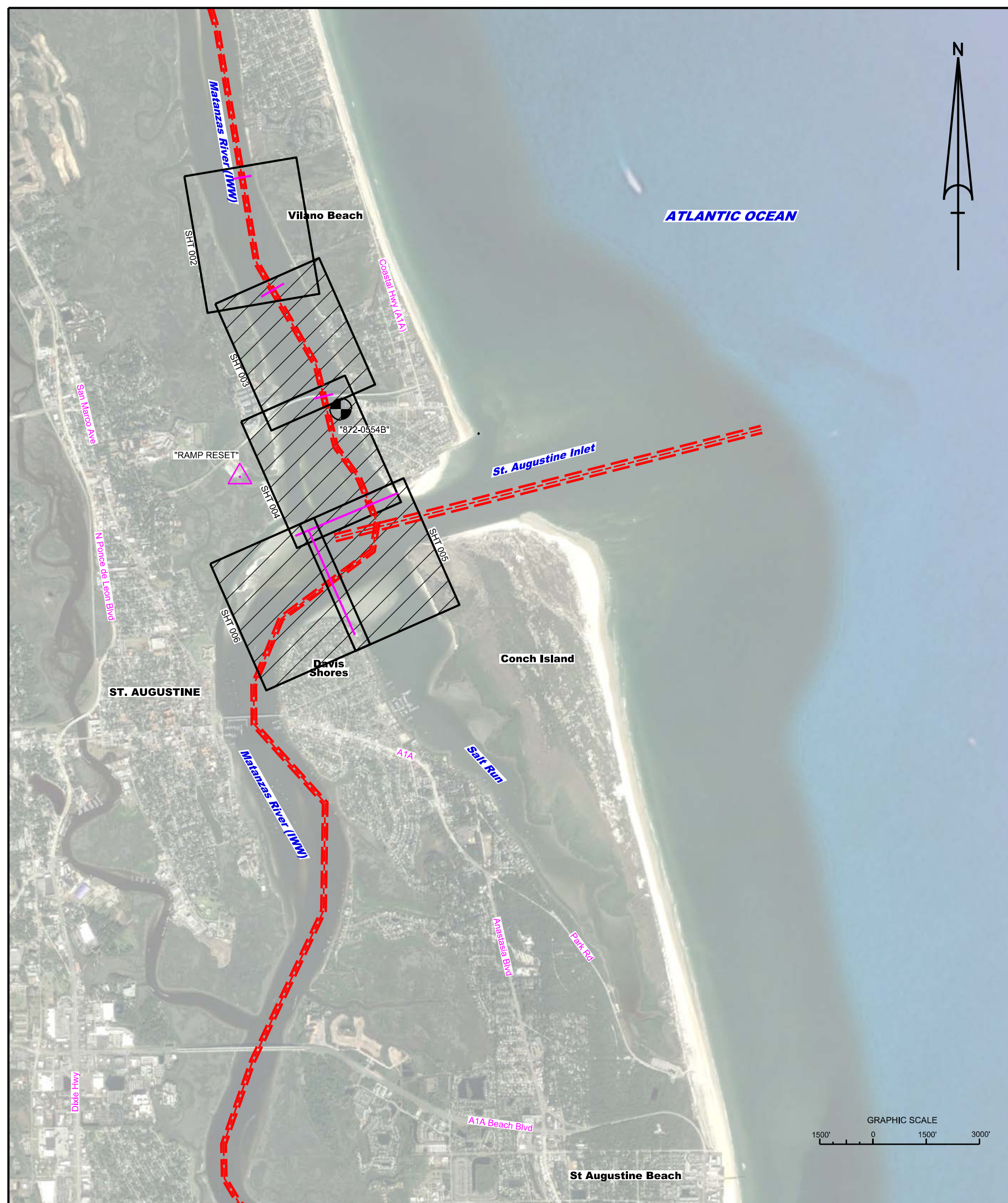
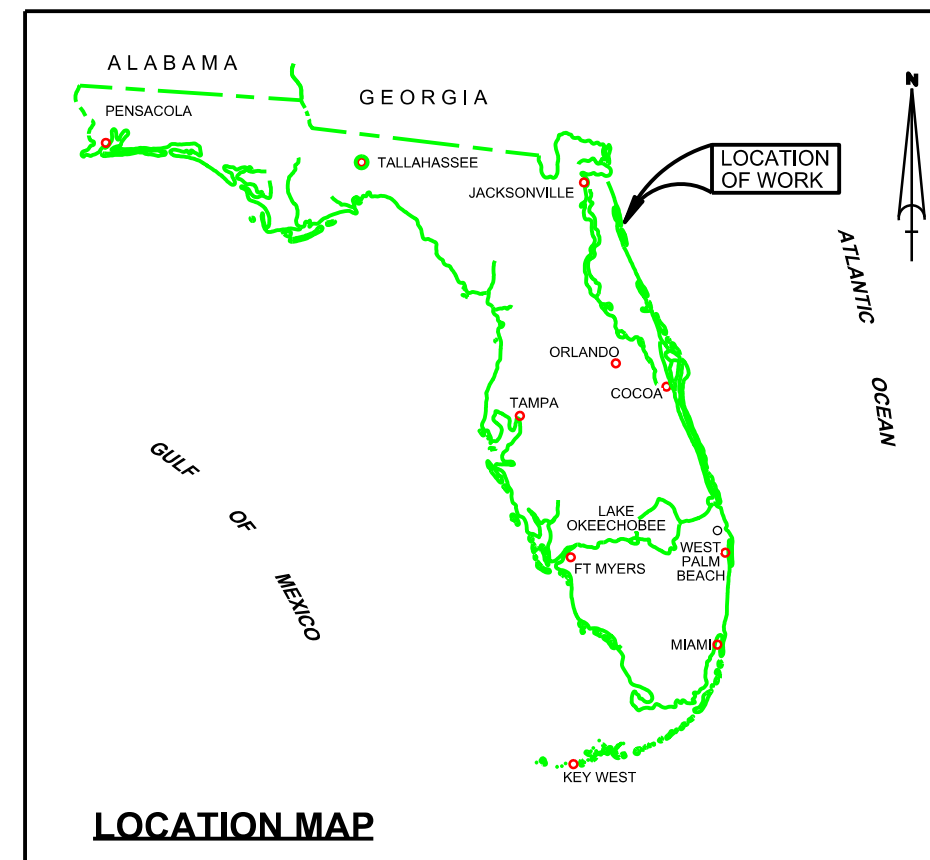


IWW CUTS 28 & 28A, FLOOD SHOAL AND DAVIS SHORES SHOAL ST. AUGUSTINE, ST. JOHNS COUNTY, FLORIDA HYDROGRAPHIC EXAM SURVEY FY22



SURVEY NOTES

1. REFER TO SURVEY NO. 22-133.
 2. DEPTHS DEPICTED BY THIS SURVEY ARE REFERENCED TO THE NORTH AMERICAN VERTICAL DATUM OF 1988 (NAVD88).
NOAA TIDAL STATION 872-0554 USED FOR THE ENTIRE PROJECT (PID: DL5712)
 3. TIDAL REDUCTIONS WERE OBTAINED UTILIZING A REAL-TIME KINEMATIC (RTK) GPS AND REFERENCED TO NAVD88. A TIDE STAFF PREVIOUSLY SET FROM SURVEY MONUMENT "872 0554 B", LOCATED ON A WOODEN PILING SOUTH OF THE CONTROL POINT, WAS USED TO VERIFY RTK TIDES PRIOR TO SURVEYING.
 4. ALL ELEVATIONS ARE BELOW THE CHART DATUM UNLESS PRECEDED BY A (+) SIGN.
 5. PLANE COORDINATES ARE BASED ON THE TRANSVERSE MERCATOR PROJECTION FOR THE EAST ZONE OF FLORIDA AND REFERENCED TO NORTH AMERICAN DATUM OF 1983 (NAD83).
 6. THIS SURVEY WAS PERFORMED USING REAL-TIME KINEMATIC (RTK) GPS POSITIONING WITH THE FOLLOWING REFERENCE BASE LOCATION:
REFERENCE BASE LOCATED AT "RAMP RESET" (PID: BBBC11)
 7. VERTICAL MEASUREMENTS WERE MADE USING A TELEDYNE ECHOTRAC E20 DUAL-FREQUENCY 28/200 KHZ SINGLE-BEAM TRANSDUCER. ALL DEPTHS SHOWN ARE IN HIGH FREQUENCY.
- | VESSEL | DATE OF SURVEY | CUT |
|----------|-----------------|--|
| SB WELLS | 14, 22 JUN 2022 | IWW CUTS 28 & 28A, FLOOD SHOAL, DAVIS SHORES SHOAL |
8. AIDS TO NAVIGATION WERE COLLECTED DURING THIS SURVEY.
 9. THE INFORMATION DEPICTED ON THIS MAP REPRESENTS THE RESULTS OF SURVEYS MADE ON THE DATES INDICATED ABOVE AND CAN ONLY BE CONSIDERED AS INDICATING THE GENERAL CONDITIONS AT THAT TIME. THIS CHART IS SOLELY FOR THE DISTRIBUTION OF AVAILABLE DEPTHS AT THE TIME OF THE SURVEY.
 10. SURVEY ACCURACY PERFORMANCE STANDARDS, QUALITY CONTROL, AND QUALITY ASSURANCE REQUIREMENTS WERE FOLLOWED DURING THIS SURVEY IN ACCORDANCE WITH USACE EM 1110-2-1003, HYDROGRAPHIC SURVEYING, 30 NOV 2013.

LEGEND	
	MONUMENT
	LIGHTED BEACON
	GREEN DAYBEACON
	RED DAYBEACON
	RED LIGHTED BUOY
	GREEN LIGHTED BUOY
	CAN BUOY
	NUN BUOY
	TIDE STAFF
8	PROJECT DEPTH

US Army Corps of Engineers
Jacksonville District
SAFETY ON THIS JOB
DEPENDS ON YOU

INTRACOASTAL WATERWAY
JACKSONVILLE TO MIAMI, FLORIDA
ST. JOHNS COUNTY
HYDROGRAPHIC EXAM SURVEY FY22
12-FOOT PROJECT
INDEX, LOCATION AND VICINITY
MAP

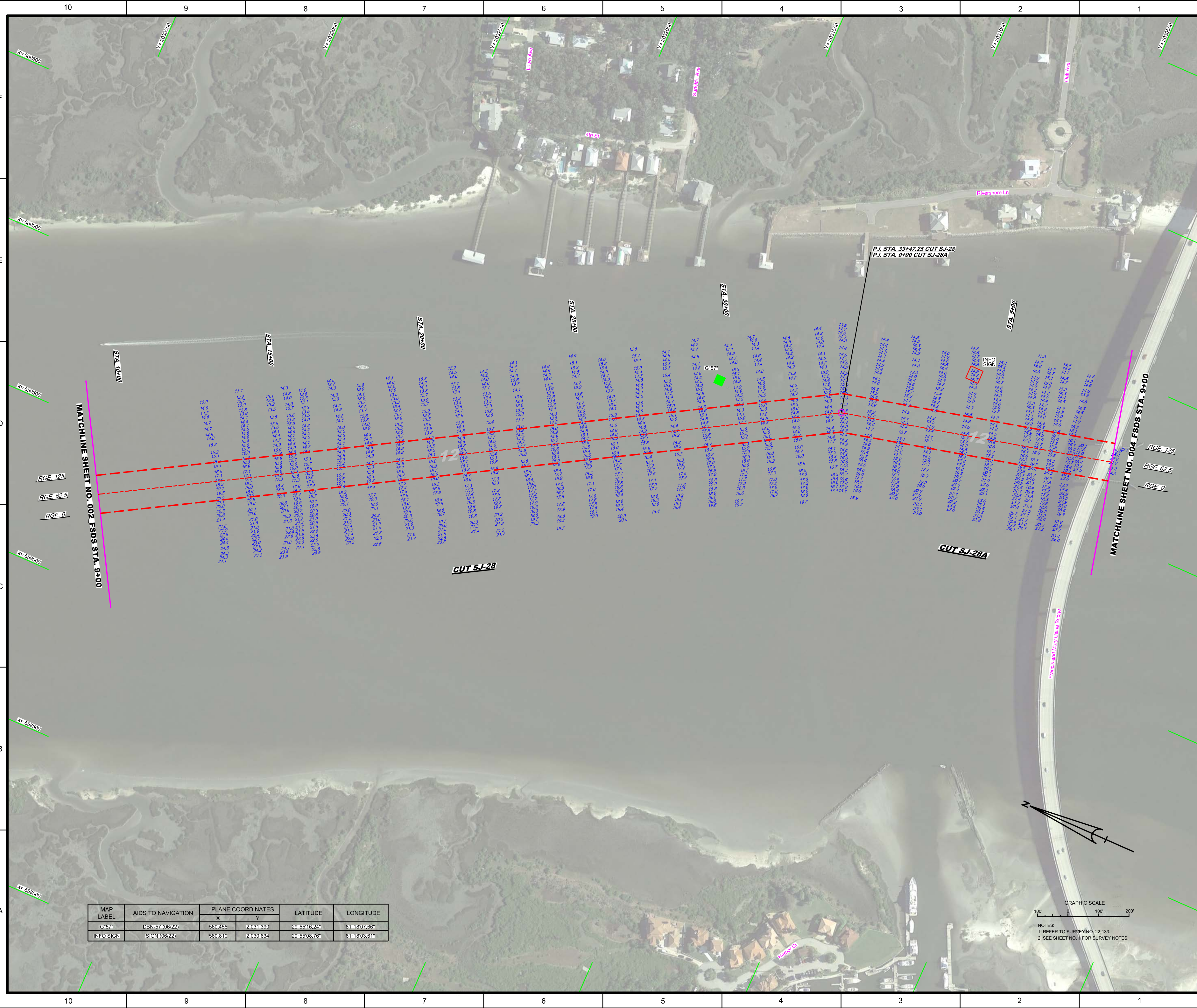
DEPARTMENT OF THE ARMY
JACKSONVILLE DISTRICT, CORPS OF ENGINEERS
JACKSONVILLE, FLORIDA

Checked by:	GHR	Designed by:	WRM
Drawn by:	WRM	DTM by:	WRM
File No.:	WR22EP-04-0004	File No.:	WR22EP-04-0004
Date:	JUN 2022	Date:	JUN 2022

Scale: AS SHOWN

Drawing no.
1 / 5

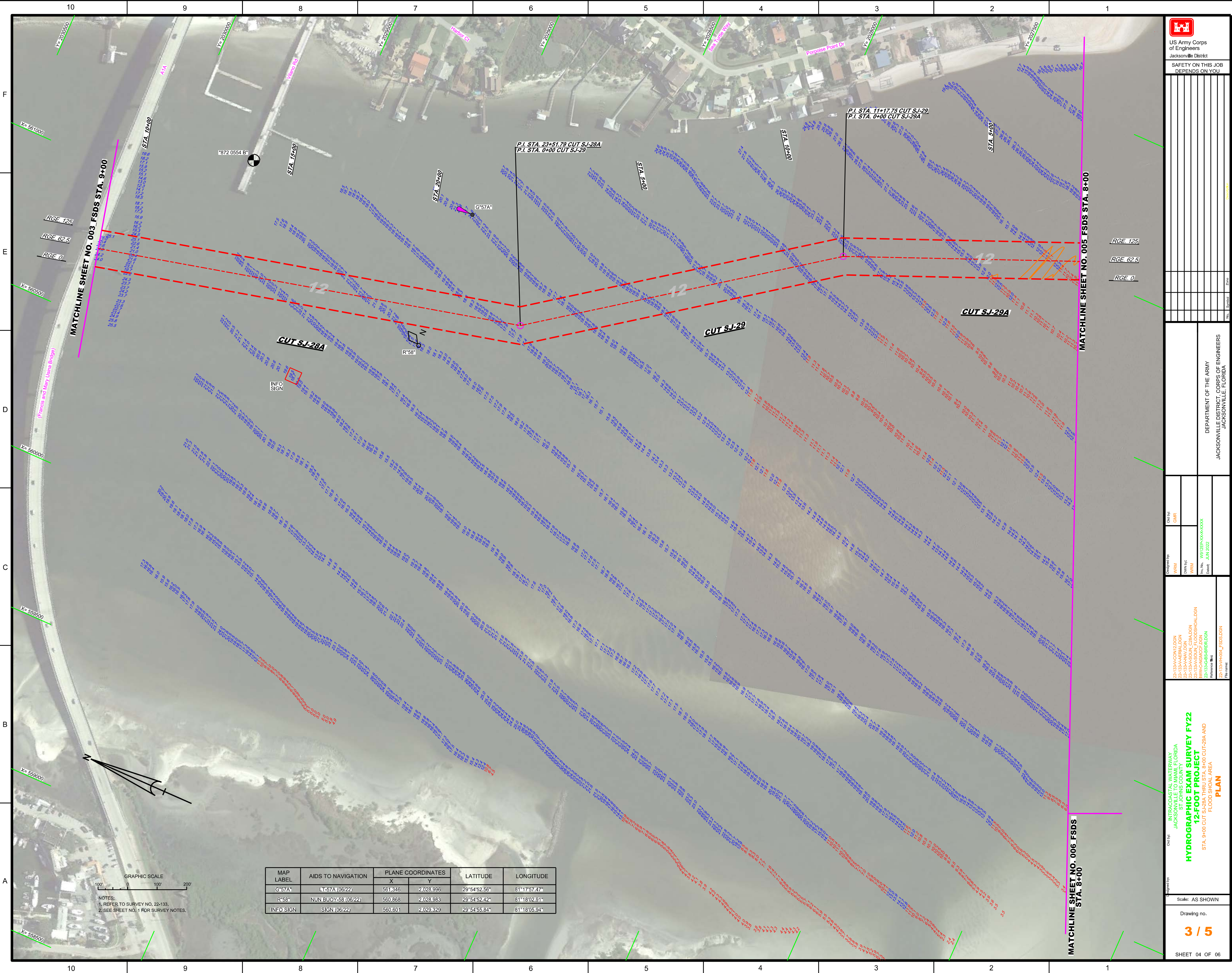
SHEET 01 OF 06



MAP LABEL	AIDS TO NAVIGATION	PLANE COORDINATES		LATITUDE	LONGITUDE
		X	Y		
G-57*	DBN-57 (06/22)	560456	2031390	29°55'16.24"	81°18'07.66"
INFO SIGN	SIGN (06/22)	560810	2030634	29°55'08.76"	81°18'03.61"



NOTES:
1. REFER TO SURVEY NO. 23-133.
2. SEE SHEET NO. 1 FOR SURVEY NOTES.



US Army Corps of Engineers
Jacksonville District
SAFETY ON THIS JOB
DEPENDS ON YOU

NAME	SYMBOL	ZONE

DEPARTMENT OF THE ARMY
JACKSONVILLE DISTRICT, CORPUS OF ENGINEERS
JACKSONVILLE, FLORIDA

Call by: GMR

Designed by: WRM
Drawn by: WRM
File No: 133A-WAY-DGN
Date: JUN 2022

22-133A-COASTAL.DGN
22-133A-SOIL_C28A.DGN
22-133A-WAY.DGN
22-133A-SOIL_C28A.DGN
22-133A-SOIL_C28A.DGN
22-133A-WAY.DGN
22-133A-SOIL_C28A.DGN

Call by: INTRACOASTAL WATERWAY
JACKSONVILLE TO MIAMI, FLORIDA
ST. JOHNS COUNTY
HYDROGRAPHIC EXAM SURVEY FY22
12-FOOT PROJECT
STA. 9+00 CUT S-J-28A THRU STA. 8+00 CUT S-J-29A AND
FLOOD SHOULDER AREA
PLAN

Scale: AS SHOWN

Drawing no.
3 / 5

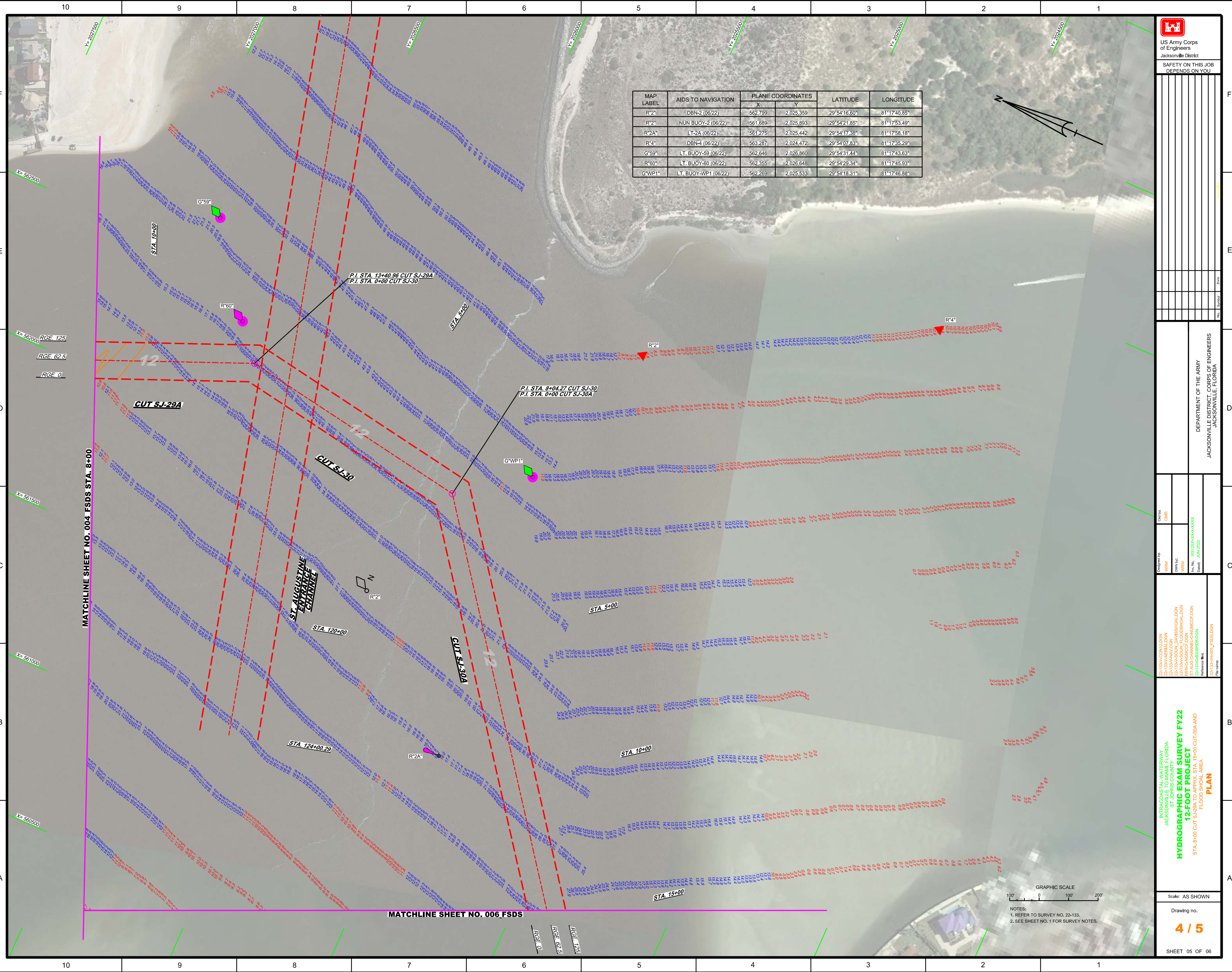
SHEET 04 OF 06

MAP LABEL	AIDS TO NAVIGATION	PLANE COORDINATES		LATITUDE	LONGITUDE
		X	Y		
G*57A	LT-57A (06/22)	561346	2,028,996	29°54'52.56"	81°17'57.47"
R*58	NUN BUOY-58 (06/22)	560,868	2,028,983	29°54'52.42"	81°18'02.91"
INFO SIGN	SIGN (06/22)	560,801	2,029,329	29°54'55.64"	81°18'05.94"

GRAPHIC SCALE
100' 0 100' 200'

NOTES:
1. REFER TO SURVEY NO. 22-133.
2. SEE SHEET NO. 1 FOR SURVEY NOTES.

MAP LABEL	AIDS TO NAVIGATION	PLANE COORDINATES		LATITUDE	LONGITUDE
		X	Y		
R*2*	DBN-2 (06/22)	562,799	2,025,359	29°54'16.60"	81°17'40.85"
R*2*	NUN BUOY-2 (06/22)	561,689	2,025,893	29°54'21.85"	81°17'53.49"
R*2A*	LT-2A (06/22)	561,275	2,025,442	29°54'17.38"	81°17'58.18"
R*4*	DBN-4 (06/22)	563,287	2,024,472	29°54'07.83"	81°17'35.29"
G*59*	LT BUOY-59 (06/22)	562,646	2,026,860	29°54'31.44"	81°17'43.63"
R*60*	LT BUOY-60 (06/22)	562,355	2,026,646	29°54'29.34"	81°17'45.93"
G*WP1*	LT BUOY-WP1 (06/22)	562,269	2,025,533	29°54'18.31"	81°17'46.88"



NOTES:
1. REFER TO SURVEY NO. 22-133.
2. SEE SHEET NO. 1 FOR SURVEY NOTES.

MATCHLINE SHEET NO. 004 FS DS STA. 8+00

MATCHLINE SHEET NO. 006 FS DS

RGE 125
RGE 62.5
RGE 0

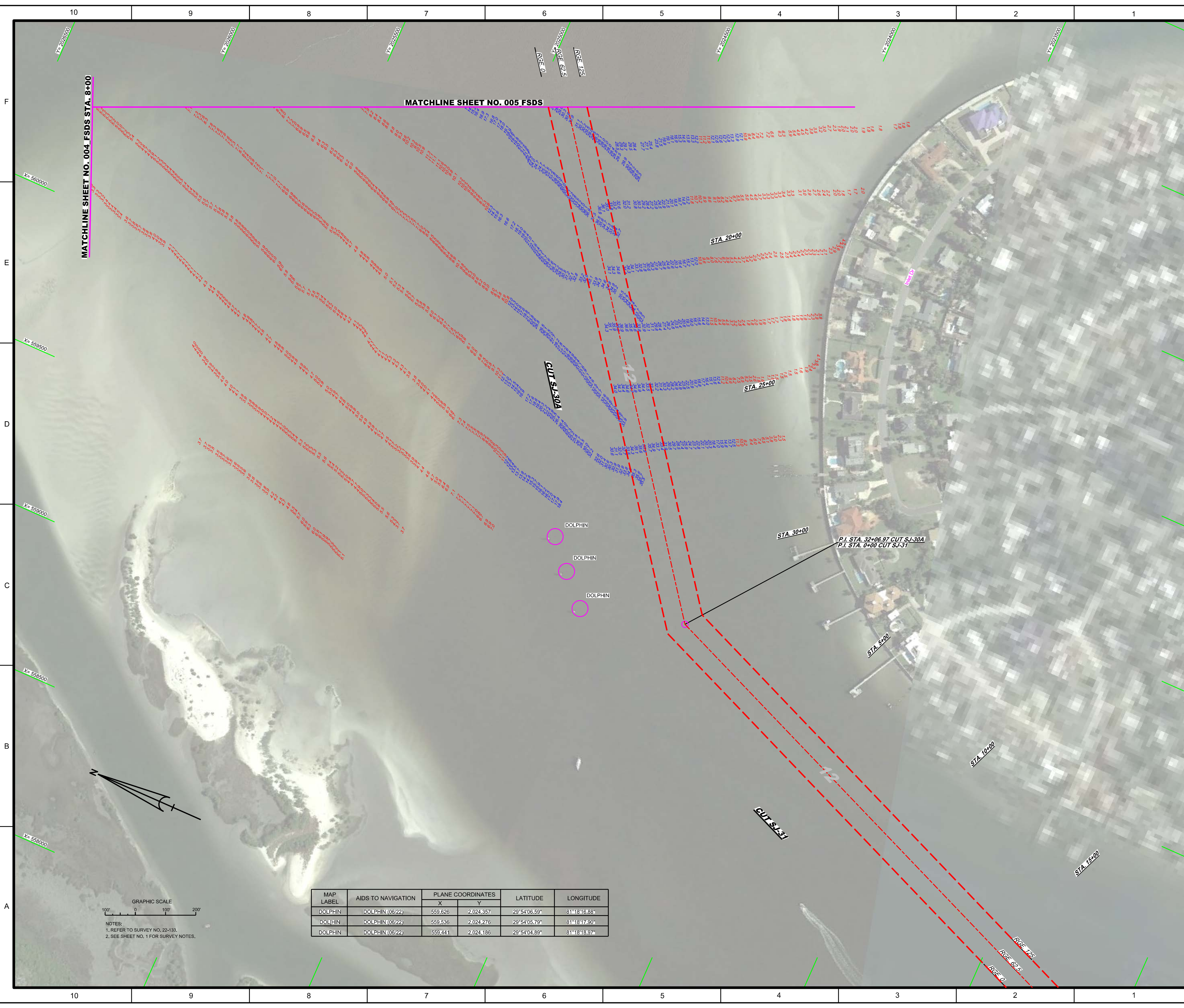
10 9 8 7 6 5 4 3 2 1
F
E
D
C
B
A

DEPARTMENT OF THE ARMY
JACKSONVILLE DISTRICT, CORPS OF ENGINEERS
JACKSONVILLE, FLORIDA

Checked by:	GRH
Designed by:	WRM
Drawn by:	WRM
File No.:	WR1255-54-00-000
Date:	JUN 2022

22-133-04-R01-DGN
22-133-04-R02-DGN
22-133-04-R03-DGN
22-133-04-R04-DGN
22-133-04-R05-DGN
22-133-04-R06-DGN
22-133-04-R07-DGN
22-133-04-R08-DGN
22-133-04-R09-DGN
22-133-04-R10-DGN
22-133-04-R11-DGN
22-133-04-R12-DGN
22-133-04-R13-DGN
22-133-04-R14-DGN
22-133-04-R15-DGN
22-133-04-R16-DGN
22-133-04-R17-DGN
22-133-04-R18-DGN
22-133-04-R19-DGN
22-133-04-R20-DGN
22-133-04-R21-DGN
22-133-04-R22-DGN
22-133-04-R23-DGN
22-133-04-R24-DGN
22-133-04-R25-DGN

INTRACOASTAL WATERWAY
JACKSONVILLE TO MIAMI, FLORIDA
ST. JOHNS COUNTY
**HYDROGRAPHIC EXAM SURVEY FY22
12-FOOT PROJECT**
APPRX. STA. 15+00 CUT SJ-30A TO APPRX. STA. 15+00 CUT-31 AND
FLOOD SHOULDER AREA
PLAN



MAP LABEL	AIDS TO NAVIGATION	PLANE COORDINATES		LATITUDE	LONGITUDE
		X	Y		
DOLPHIN	DOLPHIN (06/22)	559,626	2,024,357	29°54'06.59"	81°18'16.88"
DOLPHIN	DOLPHIN (08/22)	559,536	2,024,276	29°54'05.79"	81°18'17.90"
DOLPHIN	DOLPHIN (06/22)	559,441	2,024,186	29°54'04.89"	81°18'18.97"

NOTES:
1. REFER TO SURVEY NO. 22-133.
2. SEE SHEET NO. 1 FOR SURVEY NOTES.

